

Centrifuge CM-6MT

User-Friendly Operation

Outfitted with a user-friendly, digital control panel; RPM/RCF optional indicator; sound notification; and a digital rotor imbalance sensor; this unit is truly designed with ease-of-use in mind.

Designed For Safety

This centrifuge is cold room and refrigerator safe, and comes equipped with a transparent lid and automatic lid lock for extra convenience and safety.

Rapid Acceleration/Braking System

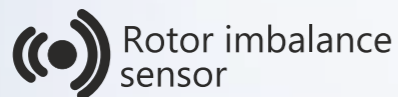
The CM-6MT has a rotational speed of up to 3500 RPM, and comes with a highly responsive rapid acceleration/braking system.

Braking levels Stopping time from 3500 RPM to 0



Compact And Versatile

The CM-6MT, with its exceptionally slim design, is one of the most compact and versatile swing-out centrifuges on the market.



Most Advanced, Service-Free Drive

Powered by the industry's most advanced, service-free drive and used in labs worldwide, the CM-6MT has proven to be an incredibly versatile, long-lasting, extremely quiet centrifuge that would make an outstanding addition to your laboratory.

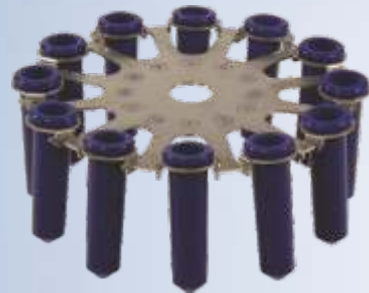
Wide selection of rotors

This multifaceted unit can accommodate 6 rotor options: 12 test tube/15 ml volume, 4 test tube/50 ml volume, 24 test tube/15 ml volume, and a rotor that can accommodate two 96-well plates ranging in sizes up to 96-deep well plates with 2 ml volume per well.

TECHNICAL SPECIFICATIONS

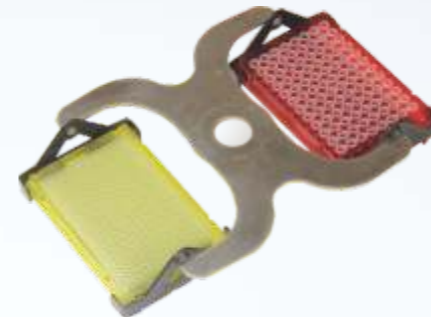
Rotor rotation speed	RPM	100 - 3500
Timer	min	1 - 99
Maximum centrifugal force	RCF	2300
Brake levels		6
Working range of temperatures	°C	from +10 up to +40
Relative air moisture at 20 °C	%	80
Voltage and frequency	V,Hz	100 - 240V; 50/60Hz
Maximal consumable power	W	250
Size of the device (L x W x H)	mm	430 x 410 x 220
Weight	kg	12.6

Rotors for centrifuges CM-6MT & CM-7S



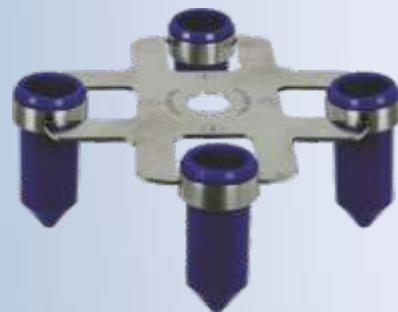
ROTOR 6M

Universal rotor for 12 adapters.
Maximal volume of compatible test tubes: 12 ml.
Maximal sizes of the applied test tubes: (D x L) 16.8 x 115mm.
Top speed: 3500 rpm.



ROTOR 6M.04

Rotor for 2 plates.
Size of applied plates: (W x L x H) 86 x 128 x 20 mm.
Top speed: 2500 rpm.



ROTOR 6M.01

Universal rotor for 4 adapters.
Maximal volume of compatible test tubes: 50 ml.
Maximal sizes of the applied test tubes: (D x L) 30 x 135 mm.
Top speed: 3500 rpm.



ROTOR 6M.05

Universal rotor for 12 adapters.
Maximal volume of compatible test tubes: 15 ml.
Maximal sizes of the applied test tubes: (D x L) 16.8 x 140mm.
Top speed: 3500 rpm.



ROTOR 6M.02

Universal rotor for 24 adapters.
Maximal volume of compatible test tubes: 12 ml.
Maximal sizes of the applied test tubes: (D x L) 16.8 x 115 mm.
Top speed: 3500 rpm.
Test tubes of 140mm length can be fitted in the external row.



ROTOR 6M.06

Universal rotor for 6 adapters.
Maximal volume of compatible test tubes: 50 ml.
Maximal sizes of the applied test tubes: (D x L) 30 x 135 mm.
Top speed: 3500 rpm.